



Fire Fighting

Water Cartage Tanks



Ute Packs - Key Features

- Moulded internal baffles for vehicle stability
- Brass outlet
- Tough and durable one-piece moulding
- 140mm vented lid
- High strength, lightweight polyethylene construction
- Provision for strap
- Wear pads to allow airflow underneath and protect ute tray

Code	Capacity (Litres)	Dimensions (L x W x H)	Outlet
FTR200	200	1050 x 750 x 600	25mm
FTR400	400	1680 x 750 x 600	25mm
FTR600U	600	1720 x 890 x 755	25mm
FTR800U	800	1720 x 890 x 925	25mm

Water Cartage Tanks - Key Features

- Brass outlet
- Forklift galvanised skids available
- Tough and durable one-piece moulding
- 400mm 1/4 turn hinged lid
- Sits directly on any flat surface
- High strength, lightweight polyethylene construction
- Provision for strap or pin mounting

Code	Capacity (Litres)	Dimensions (L x W x H)	Outlet
FTR600-S	600	1200 x 1120 x 710	40mm
FTR800-S	800	1500 x 1190 x 710	40mm
FTR1200-S	1,200	1500 x 1190 x 975	40mm
FTR2000-S	2,000	2280 x 1280 x 1040	40mm
FTR3000-S	3,000	2280 x 1540 x 1270	40mm



Brass Threaded Outlet



Quarter Turn Hinged Lid (Water Cartage)



140mm Vented Lid (Ute Pack)



FTR600U



FTR800-S

FTR2000-S

Compact Packages



Key Features

- Tough and durable one-piece moulding
 - Sits directly on any flat surface
 - High strength, lightweight polyethylene construction
 - 12m hose with fire fighting nozzle
 - Optional Bottom Fill Kit (BFK) available.
 - Wear pads to allow airflow underneath and protect ute tray
 - 36m Hose Reel & Fire-Fighting Nozzle with all -HR models
 - Provision for strap
 - Moulded internal baffles for vehicle stability
- *Refer to Water Cartage & Fire Fighting Pumps page 48 for full pump details

Code	Capacity (Litres)	Power (HP)	Dimensions (L x W x H)	Pump Code	Engine/Pump	Starter
FTRC200-25	200	2.5	1050 X 750 X 600	MB25L	Loncin/Onga	Pull Petrol
FTRC200-55	200	5.5	1050 X 750 X 970	B55H	Honda/Onga	Pull Petrol
FTRC400-25	400	2.5	1680 X 750 X 600	MB25L	Loncin/Onga	Pull Petrol
FTRC400-55	400	5.5	1680 X 750 X 970	B55H	Honda/Onga	Pull Petrol
FTRC400-55-HR*	400	5.5	1680 X 750 X 1070	B55H	Honda/Onga	Pull Petrol
FTRC600-55	600	5.5	1720 X 890 X 1050	B55H	Honda/Onga	Pull Petrol
FTRC600-55-HR*	600	5.5	1720 X 890 X 1150	B55H	Honda/Onga	Pull Petrol
FTRC800-55	800	5.5	1720 X 890 X 1260	B55H	Honda/Onga	Pull Petrol
FTRC800-55-HR*	800	5.5	1720 x 890 x 1360	B55H	Honda/Onga	Pull Petrol

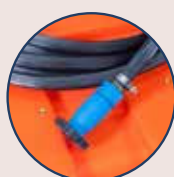
*HR - Includes 36m Hose Reel



Pump



Hose Reel



Nozzle



FTRC400-55



FTRC800-55-HR

Skid Mounted Packages



Key Features

- 6.5HP Honda powered twin-impeller onga (pentair) pump
- 36m hose reel and fire fighting nozzle included
- Heavy duty galvanised skid frame
- Fork on - fork off capability
- Bottom fill manifold with 6m suction hose
- Optional dust suppression nozzle kit available (DSN20K)

*Refer to Pump page 48 for full pump details

Product Range

Code	Capacity (Litres)	Starter	Dimensions (L x W x H)	Pump Code
FTRS600-S	600	Pull-Petrol	1685 x 1160 x 810	B65HT
FTRS800-S	800	Pull-Petrol	1720 x 1500 x 810	B65HT
FTRS1200-S	1,200	Pull-Petrol	1720 x 1500 x 1075	B65HT
FTRS1200ES-S	1,200	Electric-Petrol	1720 x 1500 x 1075	B65HTES
FTRS2000-S	2,000	Pull-Petrol	2850 x 1480 x 1145	B65HT
FTRS2000ES-S	2,000	Electric-Petrol	2850 x 1480 x 1145	B65HTES
FTRS2000ESD-S	2,000	Electric-Diesel	2850 x 1480 x 1145	FFDPTES
FTRS3000-S	3,000	Pull-Petrol	2850 x 1540 x 1370	B65HT
FTRS3000ES-S	3,000	Electric-Petrol	2850 x 1540 x 1370	B65HTES
FTRS3000ESD-S	3,000	Electric-Diesel	2850 x 1540 x 1370	FFDPTES



FTRS600-S

Trailer Packages



Key Features

- 6.5HP Honda powered twin-impeller onga (pentair) pump
- Hot dip galvanised dual axle trailer
- 14" wheels - 5 stud pattern
- Electric brakes - 2000L
- Hydraulic brakes - 1200L
- Road pack including brakes and LED lights
- Emergency breakaway protection - 2000L
- Compliance plate - road registrable
- 400mm 1/4 turn hinged lid
- Trailer mounted toolbox to protect the hose
- Suction return manifold with 6m suction hose
- 36m Hose reel & fire fighting nozzle
- Optional dust suppression nozzle kit available (**DSN20K**)

*Refer to Water Cartage & Fire Fighting Pumps page 48 for full pump details

Product Range

Code	Capacity (Litres)	Pump*	Starter	Engine/Pump	Tank Dimensions (L x W x H)	Trailer Dimensions (L x W x H)
FTRT1200-S	1200	B65HT	Pull - Petrol	Honda/Onga	1500 x 1190 x 975	3940 x 1770 x 1500
FTRT1200TES-S	1200	B65HTES	Electric - Petrol	Honda/Onga	1500 x 1190 x 975	3940 x 1770 x 1500
FTRT1200TESD-S	1200	FFDPTES	Electric - Diesel	Yanmar/Onga	1500 x 1190 x 975	3940 x 1770 x 1500
FTRT2000-S	2,000	B65HT	Pull - Petrol	Honda/Onga	2280 x 1280 x 1040	4460 x 1970 x 1650
FTRT2000ES-S	2,000	B65HTES	Electric - Petrol	Honda/Onga	2280 x 1280 x 1040	4460 x 1970 x 1650
FTRT2000ESD-S	2,000	FFDPTES	Electric - Diesel	Yanmar/Onga	2280 x 1280 x 1040	4460 x 1970 x 1650



FTRT2000-S

Pumps & Accessories

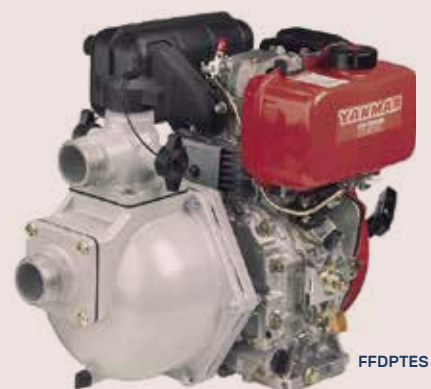
Code	Description	Engine/ Pump	Starter	Power (HP)	Head (m)	Flow (LPM)	Inlet	Outlet	# of Outlets	Warranty (yrs)
MB25L	Mini Blaze 2.5HP	Loncin/ Onga	Pull - Petrol	2.5	21	133	25mm BSPM	25mm BSPM	1	1
B55H	Honda 5.5HP Single Impeller	Honda/ Onga	Pull - Petrol	5.5	60	585	32mm BSPM	25mm, 25mm, 40mm BSPM	3	2
B65HT	Honda 6.5HP Twin Impeller	Honda/ Onga	Pull - Petrol	6.5	100	373	50mm BSPM	25mm, 25mm, 40mm BSPM	3	2
B65HTES	Honda 6.5HP Twin Impeller Electric Start	Honda/ Onga	Electric - Petrol	6.5	100	373	50mm BSPM	25mm, 25mm, 40mm BSPM	3	2
FFDPTES	Yanmar 7HP Diesel Electric Start	Yanmar/ Onga	Electric - Diesel	7	100	450	50mm BSPM	25mm, 25mm, 40mm BSPM	3	2



MB25L



B55H



FFDPTES

Fire Fighting Accessories

Code	Description	Dimensions (L x W x H)
BFK	Bottom Fill Kit - Suits FTRC 5.5HP Compact Fire Units	
FFHR1	Hose Reel Only 20mm x 36mtr	555 DIA x 165W
TFFK	Tank Fire Fighting Kit with 36mtr Hose reel on galvanised stand	900 x 600 x 700
FHR	Manual Hose Reel 20mm x 36mtr	427 x 391 x 380
DSN20K	Dust Suppression Nozzle	



TFFK

*Includes hose

FFHR1

*Does not include hose



POLYMASTER

Polymaster

Polymaster

Delivery & Installation

It is the owner's responsibility to provide clear access to site, and to secure tank/s left at site.

If the driver cannot reach the desired location, the tank/s will be left in the closest and safest location deemed possible by our driver. If the tank/s can not be left at site, the owner will incur a redelivery charge.

All products can be delivered throughout Australia. Call us for a quote for deliveries outside nominated zones.

Delivery Requirements

Clearance required for truck and trailer is 19m long, 5m high, 3.5m wide. To put this into perspective, our trucks are longer than a semi-trailer.

It is the Owners responsibility to position the tank on the pad and to connect the tank.

Large and/or bulky products will require a lifting device (forklift etc) to unload from the truck. This is not supplied by the driver.

Re-Scheduling Fee

Please be advised that if the Owner chooses to change the delivery date a re-scheduling fee may be incurred.

For more information visit <https://www.polymaster.com.au/news/requirements-for-tank-deliveries/>

Polymaster Tank Installation Guide

1. No Entry Required

Installation of a Polymaster tank does not require entry into the tank.

2. Tank Site Preparation

The site must be firm, level, and flat. A concrete pad or a well-compacted sand base (75mm–100mm deep) is recommended. Other suitable bases include crushed dust or consolidated fill, free of rocks, stones, or sharp objects. The base should extend 600mm beyond the tank's diameter. A retaining wall should support the base's perimeter to prevent erosion.

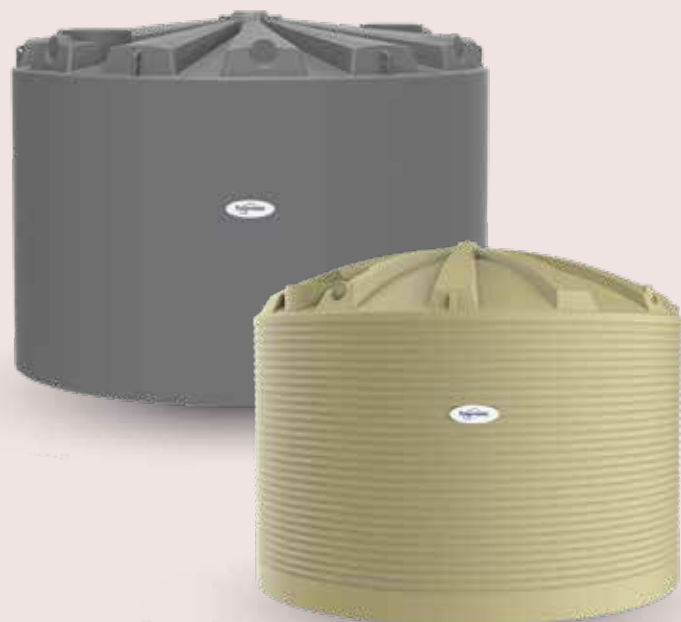
3. Overflow & Drainage

The overflow must be piped away from the tank to avoid undermining the base.

4. Plumbing & Pipework

A flexible hose (minimum 300mm/12") must be installed after the tank valve to absorb shocks and movement.

If the tank is placed on a stand, do not support any pipework directly from the tank. Note: Failure to properly install tank as per instructions will void warranty. Never enter a tank alone. Have an attendant stand by. Restricted Space - only enter after carrying out a Hazard Identification Risk Assessment (H.I.R.A.).



Free Delivery (Within Zone 1)

Polymaster offers free delivery to site throughout most of Victoria, South Australia and parts of New South Wales & Queensland for tanks exceeding 13,000Ls (within zone 1). Please refer to our free delivery zone map on polymaster.com.au/delivery-installation.

All tanks less than 13,000L are delivered free to store (within zone 1). A delivery fee will be incurred to deliver these tanks to site.





Polymaster

Precision
Engineered perfection.



Polymaster



1800 062 064
polymaster.com.au

Search **Polymaster** online.



SCAN TO VIEW
ONLINE